

Safeguard Doors

A DIVISION OF ADAMS RITE EUROPE LIMITED



Security Doors
Bullet Resistant Doors
Blast Resistant Doors
Fire Doors

Made to Measure Security



Safeguard Doors

A DIVISION OF ADAMS RITE EUROPE LIMITED

From our premises in the heart of England, Safeguard Doors manufactures bespoke high quality security, bullet resistant and bomb blast doors.

Our staff offer expertise in all aspects of door manufacture from surveying and technical advisory service to production and installation. As a potential or existing client you can be reassured that all of our staff are fully experienced within the security door industry.

Safeguard Doors provide levels of security which are supported by comprehensive testing evidence to meet customer's specific requirements. Our doors can accommodate all locking systems and ironmongery including single point locking, multi-point locking and access control.

The appearance of our door sets are discreet. This in itself can enhance its protection compared with other door materials which may invite unwanted attention even from afar.



Specialist finishes such as veneers, paints, and special resin and epoxy coatings are also available. The materials used in the production of our doors are from sustainable sources. Of equal importance is our attitude towards health and safety which we feel can only promote a good and safe working environment for both staff and clients.

Safeguard Doors provides made to measure security, handling each door project from initial discussions through to delivery of the completed product.

Safeguard Doors has a long history of providing quality and service within the security door industry.

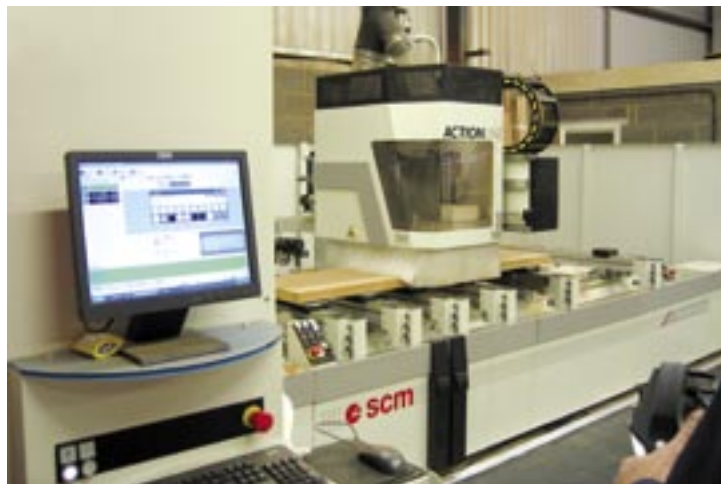
Its amalgamation with Adams Rite Europe Limited has further reinforced its product portfolio and profile within the security industry. As a full member of the BSIA, DMA and APPSS we are committed to meeting our goal of continued development of our products and services.

Since acquiring the Adams Rite Group, ASSA ABLOY have, through the investment in new technology, increased the manufacturing capability of Safeguard Doors. This investment, coupled with the addition of further manufacturing and office space, will enable Safeguard Doors to provide the capacity and flexibility to meet today's high demands for people and property protection.

Product Index



■ Concept 1 Security Door	4
■ Concept 2 Security Door	6
■ Concept 3 Security Door	8
■ Independent Physical Testing	10
■ Independent Bullet Resistant Testing	12
■ Independent Blast Testing	16
■ Independent Fire Testing	18
■ The Safehaven Door	19
■ The Fenwick and Cromwell Doors	20
■ The Bowden and Wellington Doors	21
■ Web Site and Video information	22



Concept 1 Security Door

Door Specification

- 44/45mm solid hardwood/lamelled core and exterior facings.
- 1/2 hour fire resistance can be achieved with the inclusion of the appropriate intumescent seals.
- Quality timber facing veneers, if applicable: Ash, Mahogany, Oak etc.
- Hardwood lippings are fitted to all four edges.
- Vision panels can be fitted into the door core. The design will depend on the application, level of security required and limitations with regard to the fire certification.
- Finish - lacquered, stained or painted.

Door Frame Specification

- Minimum 95mm x 70mm solid hardwood section.
- Designed to accommodate intumescent strip or smoke seals, if required.
- Finish - options as per the door specification.
- 5 no. Hilti frame fixings Ref. No.132/10 each side of door frame.

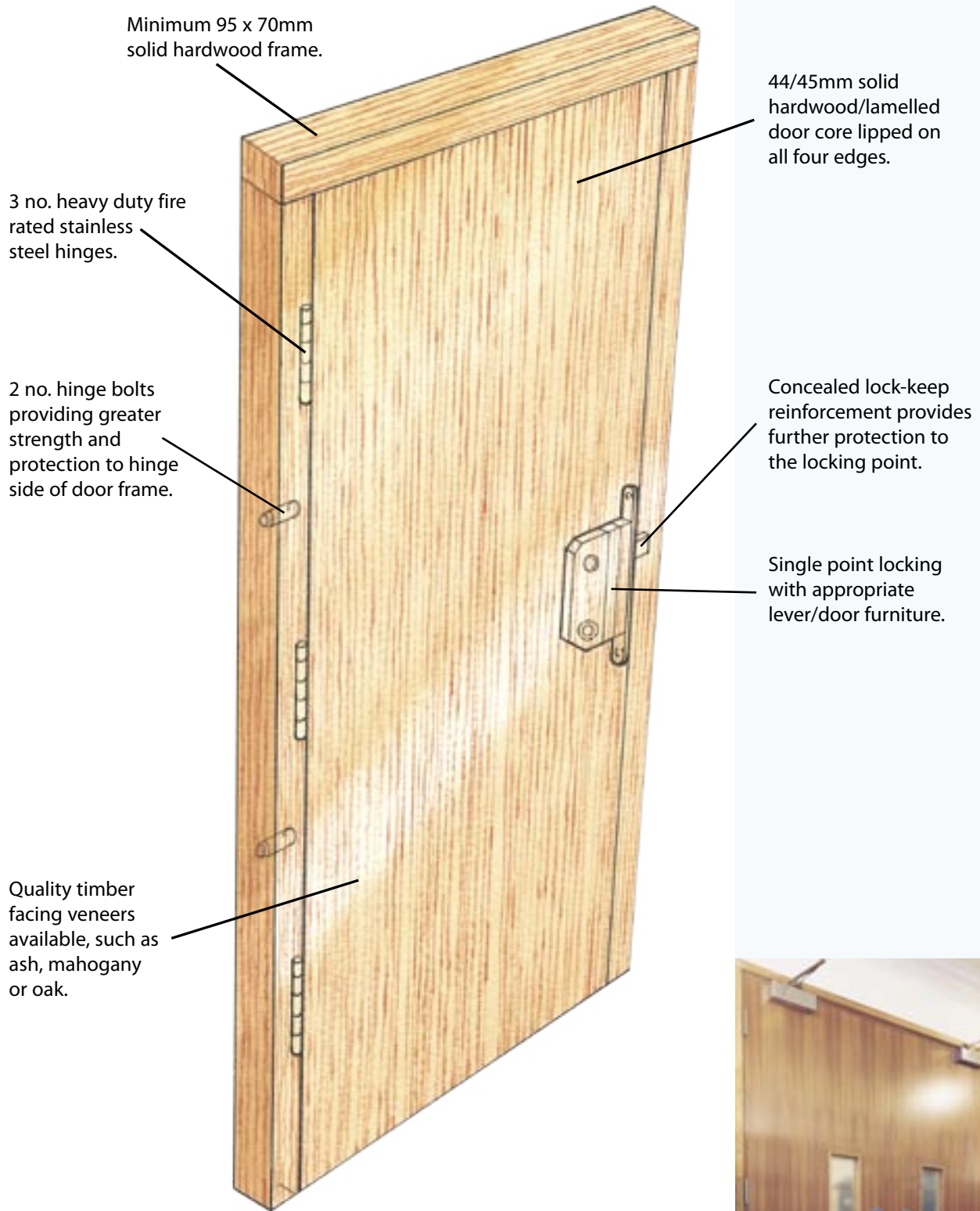
Ironmongery Specification

- Hinges - 3 no. heavy duty, fire rated, stainless steel hinges.
- Single point locking with appropriate lever/door furniture.
- Concealed lock keep reinforcement providing further protection to the locking point.
- 2 no. hinge bolts providing greater strength and protection to hinge side of the door frame.

Options

- Special finishes such as two-part resin applications can be applied to the doorsets.
- Threshold or cill board available.
- Single, two or three point locking.
- Solid stainless steel continuous hinge (non-fire rated version).
- Steel faced door cores.
- Fabric alarmed providing a simple and effective means of alarming the security door.
- Steel door frames.
- Continuous steel 'T' bar section fitted to the locking edge of the door core in order to provide protection of the door gap in outward opening door applications.
- Panel effect doors created using applied mouldings, therefore, enabling the strength and security of the door to be maintained.





Concept 2 Security Door

Door Specification

- 54mm solid hardwood/lamelled core and exterior facings.
- 1 hour fire resistance can be achieved with the inclusion of the appropriate intumescent seals.
- Quality timber facing veneers, if applicable: Ash, Mahogany, Oak etc.
- Hardwood lippings are fitted to all four edges.
- Vision panels can be fitted into the door core. The design will depend on the application, level of security required and limitations with regard to the fire certification.
- Finish - lacquered, stained or painted.

Door Frame Specification

- Minimum 95mm x 70mm or alternatively 120mm x 70mm solid hardwood section.
- Designed to accommodate intumescent strip or smoke seals, if required.
- Finish - options as per the door specification.
- 5 no. Hilti frame fixings Ref. No.132/10 each side of door frame.

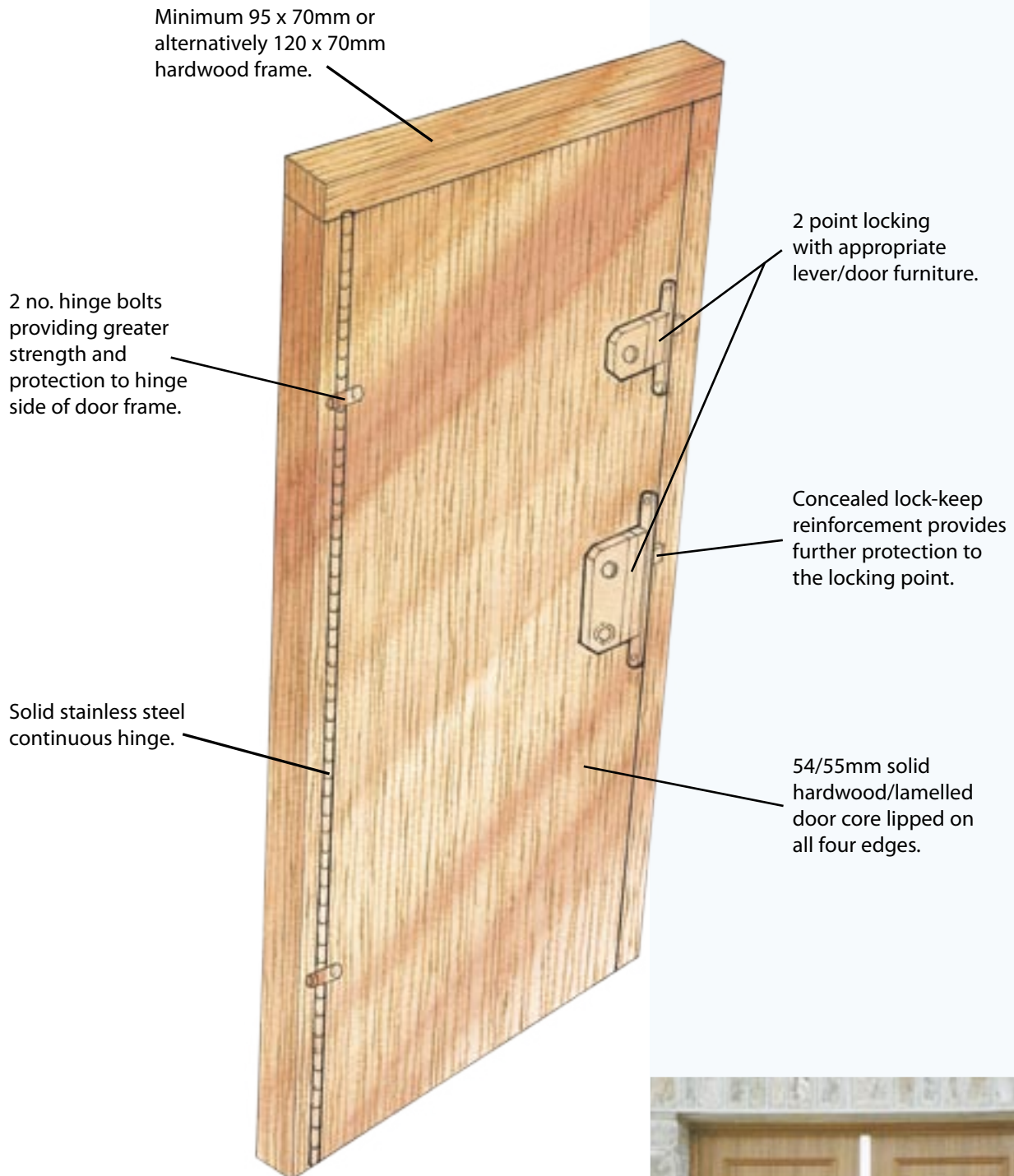
Ironmongery Specification

- Solid stainless steel continuous hinge.
- Two point locking with appropriate lever/door furniture.
- Concealed lock keep reinforcement providing further protection to the locking point.
- 2 no. hinge bolts providing greater strength and protection to hinge side of the door frame.

Options

- Special finishes such as two-part resin applications can be applied to the doorsets.
- Threshold or cill board available.
- Surface mounted three point locking.
- Concealed three point locking used in conjunction with this door set has been independently assessed for a 30 minute fire rating.
- Steel faced door cores.
- Fabric alarmed providing a simple and effective means of alarming the security door.
- Steel door frames.
- Hinges - 3 no. Heavy Duty, Fire rated, Stainless Steel Hinges.
- Continuous steel 'T' bar section fitted to the locking edge of the door core in order to provide protection of the door gap in outward opening door applications.
- Panel effect doors created using applied mouldings, therefore, enabling the strength and security of the door to be maintained.





Concept 3 Security Door

Door Specification

- 68mm solid hardwood/lamelled core with two steel sheet inserts and exterior timber facings.
- 1 hour fire resistance. Report No. WARRES 117935 and Assessment No. c120730. Tested by Warrington Fire Research.
- Quality timber facing veneers, if applicable: Ash, Mahogany, Oak etc.
- Hardwood lippings are fitted to all four edges.
- Vision panels can be fitted into the door core. The design will depend on the application, level of security required and limitations with regard to the fire certification.
- Finish - lacquered, stained or paint.

Door Frame Specification

- Minimum 120mm x 70mm solid hardwood section.
- Designed to accommodate intumescent strip or smoke seals, if required.
- Finish - options as per the door specification.
- 5 no. Hilti frame fixings Ref. No.132/10 each side of door frame.

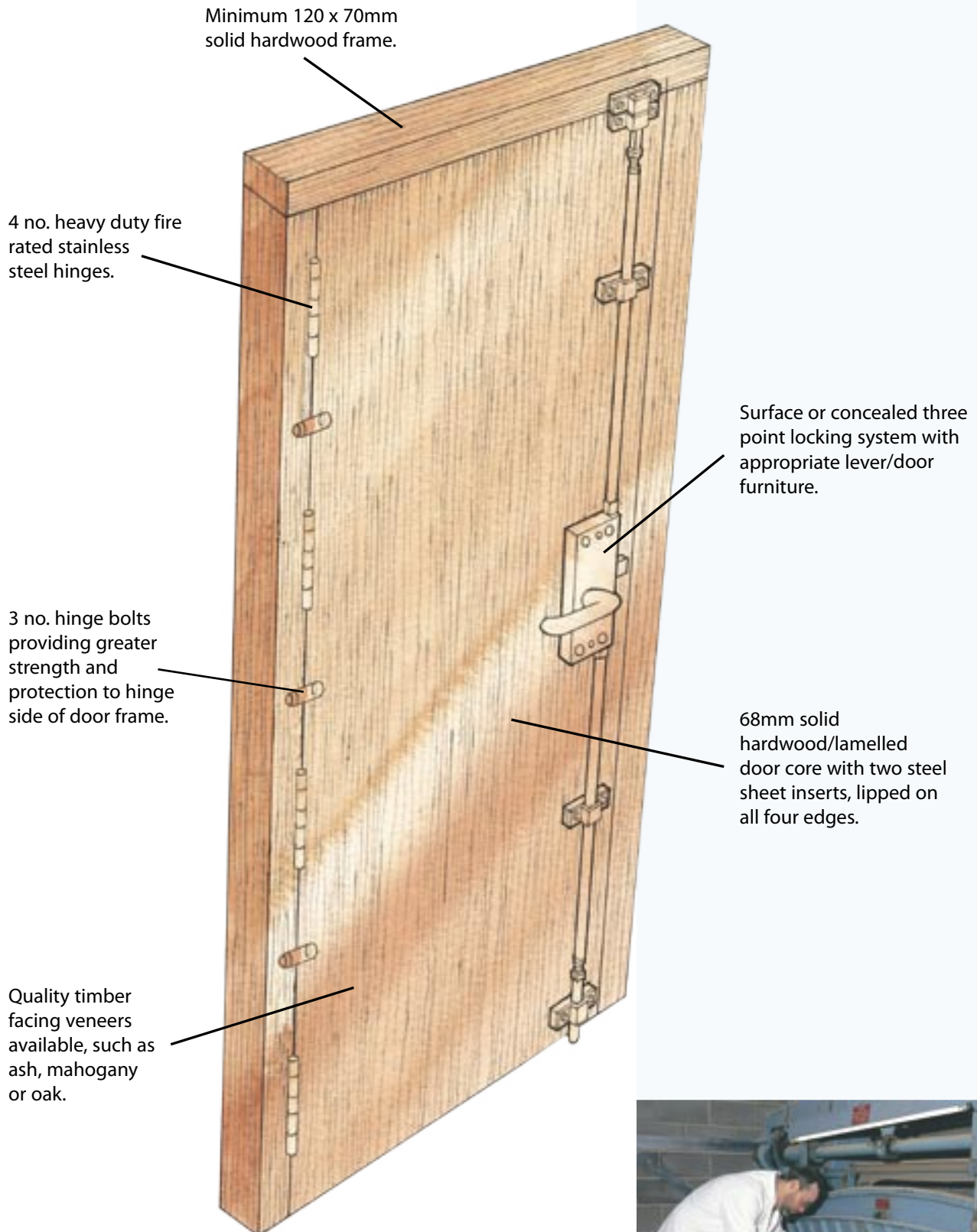
Ironmongery Specification

- Hinges - 4 no. heavy duty, fire rated, stainless steel hinges.
- Surface or concealed three point locking with appropriate lever/door furniture.
- Concealed lock keep reinforcement providing further protection to the locking point.
- 3 no. hinge bolts providing greater strength and protection to hinge side of the door frame.

Options

- Special finishes such as two-part resin applications can be applied to the doorsets.
- Threshold or cill board available.
- Solid stainless steel continuous hinge (non-fire rated version).
- Steel faced door cores.
- Fabric alarmed providing a simple and effective means of alarming the security door.
- Built-in spy-hole camera for covert surveillance.
- Steel door frames.
- Continuous steel 'T' bar section fitted to the locking edge of the door core in order to provide protection of the door gap in outward opening door applications.
- Panel effect doors created using applied mouldings, therefore, enabling the strength and security of the door to be maintained.





Independent Physical Testing

Testing Information

- Independently tested in accordance with the requirements of Loss Prevention Certification Board (BRE Ltd) – LPS 1175: Issue 5 June 2000 Levels 2, 3 & 4
'Specification for testing and classifying the burglary resistance of building components, strongpoints and security enclosures.'
- Doors have been tested and approved by the British Government.
- Independently fire tested by Warrington Fire Research – one hour fire resistance to BS EN 1634-1



These images are from the Safehaven Door video on our web site, which shows physical, ballistic and blast attacks on the doors:

www.safeguarddoors.co.uk/video

The First...

- Safeguard Doors have successfully, independently, tested security doors in accordance with Loss Prevention Certification Board - LPS 1175: Issue 5 Levels 3 & 4.
- Achieving Level 4, the first timber door company to do so, means that we can offer the highest level of security for timber composite doors whilst maintaining the elegant design features and detailed finishes required to match the most prestigious surroundings.
- The levels of security achieved are regularly specified by leading insurance companies and the British Government.
- To complete this flexible door package and meet with your requirements, these doors have been fire tested to one hour, meeting BS EN 1634-1 the demanding new European Standard for fire resistance.



Independent Bullet Resistant Testing

Testing Information

- Safeguard Doors Bullet resistant doors and frames have been independently tested upto Class G2 Hand Gun 44 Magnum and S86 12 bore shotgun with single solid lead slug.
- The independent testing was carried out by Wiltshire Ballistic Services.
- The extent of the testing included potential weak spots such as lockcases, cylinder/keyholes, hinges and glazing apertures.
- Inward and outward opening door applications were also accounted for within the independent test.

Finishes

- A variety of finishes are available which include:
 - Paint finish
 - Veneers – stained
 - Solid featured panelled construction

Construction

- The construction of the bullet resistant door can be further enhanced to accommodate protection against sustained physical attack. For more information please see The Safehaven Door on page 19.





WILTSHIRE BALLISTIC SERVICES

The Ranges, Station Road, Devizes, Wiltshire SN10 1BZ, England

TEST REPORT



SAFEGUARD DOORS TEST REPORT

Report on ballistic trials conducted on a bullet resistant door and frame combination known as Bullet Resistant Door.

The Door frame is a steel & timber composite and the door is fitted with a glazed panel and electrical release mechanism.

The tests were conducted by Wiltshire Ballistic Services on 25th May 1999 and 25th April 2000 respectively. The samples were tested to BS 5051 Levels G2 and S86 with all attacks at 90° to the surface. The testing was carried out from both sides of the samples provided i.e. as both inward opening and outward opening solutions.

COMPONENT TESTED	THREAT	VELOCITY	RESULT
Door Main Panel	G2	472 - 480 m/s	Pass
	S86	428 m/s	Pass
Door/Electrical Release/Frame	G2	475 - 478 m/s	Pass
	S86	440 m/s	Pass
Ditto At Lock & Key Cylinder	G2	470 - 478 m/s	Pass
	S86	421 m/s	Pass
Glazing Panel Retaining System Door & Frame Junction	G2	476 - 477 m/s	Pass
	G2	474 - 478 m/s	Pass

D.J. Barnard, Partner
Wiltshire Ballistic Services
25th April 2000

Independent Bullet Resistant Testing

Testing Information

- Safeguard bullet resistant doorsets have now been successfully tested in accordance with the requirements of BS EN 1522 : 1998 / BS EN 1523 : 1999
- Test level achieved is FB5(s) & FB6(s) – equivalent BS 5051 R1 & R2
- Independent testing was carried out by Wiltshire Ballistic Services

Testing Classification

Class	Weapon Type	Calibre	Bullet Type	Bullet Mass	Test Range	Bullet Velocity	Comparison
FB5(s)	Rifle	5.56 x 45*	FJ ²⁾ /PB/SCP1	4,0 ± 0,1	10 ± 0,5	950 ± 10	Equiv. R1
FB6(s)	Rifle	5.56 x 45*	FJ ²⁾ /PB/SCP1	4,0 ± 0,1	10 ± 0,5	950 ± 10	Equiv. R2
	Rifle (see note)	7.62 x 51*	FJ ¹⁾ /PB/SC	9,5 ± 0,1	10 ± 0,5	950 ± 10	

FJ¹⁾ = full steel jacket (plated)

FJ²⁾ = full copper alloy jacket

PB = pointed bullet

SC = soft core (lead)

SCP1 = soft core (lead) with steel penetrator (type SS109)

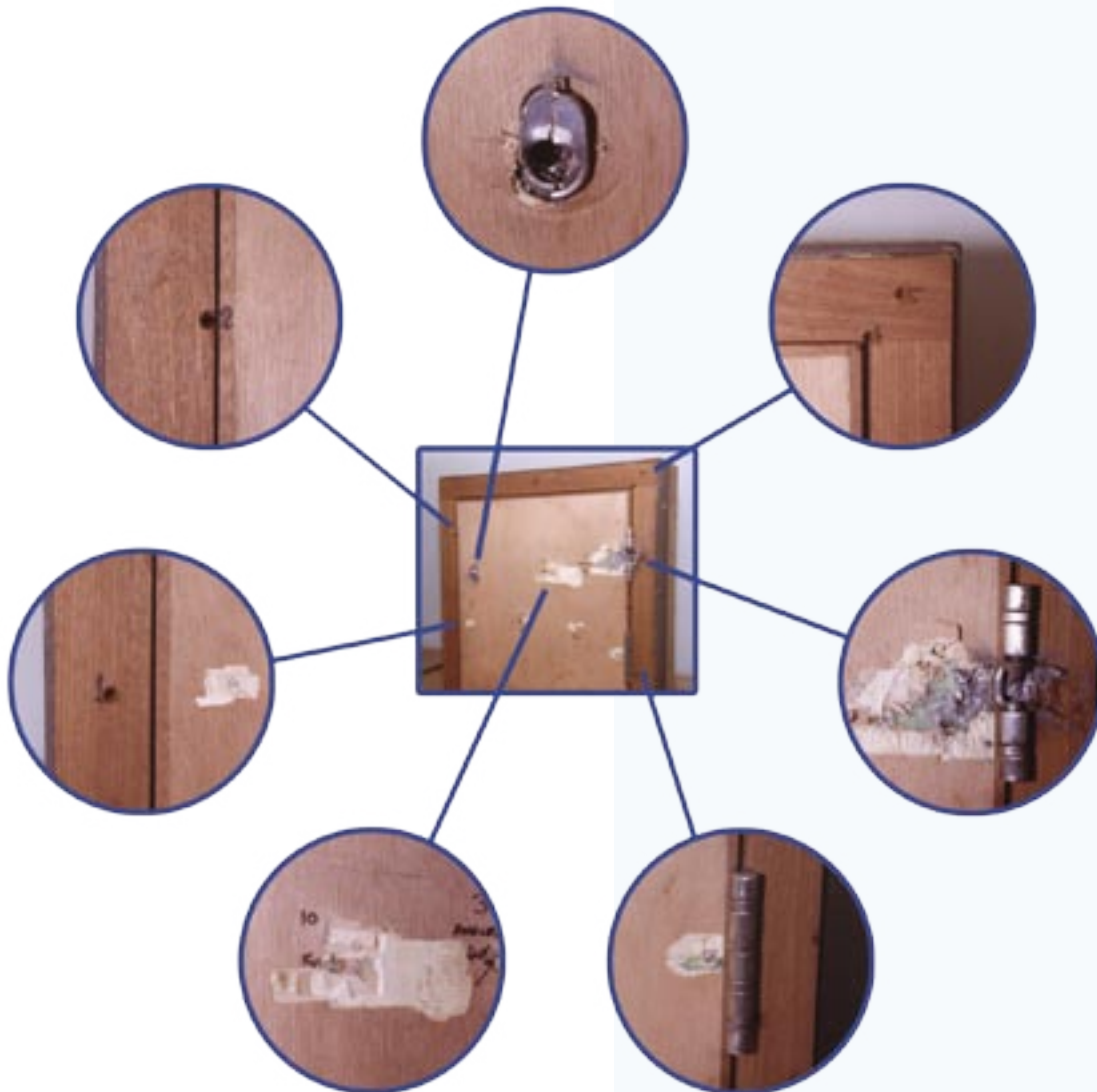
* To achieve the stated values for [5.56 x 45], the recommended barrel twist length = (178±10)mm

Note 1: When a shot is to be fired at a single point the test range may be reduced to achieve the firing accuracy as defined in Section 6 of EN 1523:1998. In this case it may not be possible to measure the velocity of the bullet.



European Standards

- BS EN 1522 : 1998 - windows, doors, shutters and blinds (bullet resistant).
BS EN 1523 : 1999 - windows, doors, shutters and blinds (bullet resistant).
- The European Standards have not only raised the standard of independent testing requirements but in addition have provided specific guidelines for the testing of doorsets which the original British Standards (BS 5051 - part one - bullet resistant glazing requirements) did not provide for.
- The image below indicates the comprehensive test method used and the severity of the ballistic attack, which should not be underestimated.



Independent Blast Testing

Following testing by Cranfield Ordnance Test and Evaluation Centre at West Lavington, these specialist doorsets were proven to offer considerable protection against **explosive blast properties** and **fragmentation** typically associated with the use of explosive devices by criminals and terrorists. As with all our doorsets they are available in a wide variety of finishes and non-standard sizes.

Safeguard Doors have a broad and impressive portfolio of blast testing evidence allowing the client flexibility in choice of product to meet their particular needs.

This success with testing for blast effect enables us to offer doors to suit the upgrading and replacement market, as well as new applications, with customised finishes such as paints, veneers and panel effects to suit individual requirements.

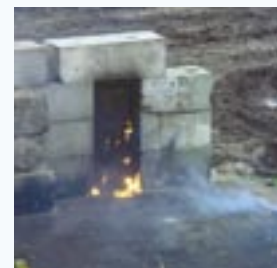
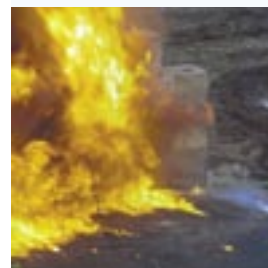
This extends our range of timber doorsets to cover all aspects of security, bullet resistant and blast effect, enhanced by the quality of performance, service and attention to detail that you expect from the major manufacturer of security related doorsets in the UK.

Features

- Inward or outward opening applications.
- Protect against blast pressure with a minimum of 10 bar.
- Designed to protect against fragmentation.
- Optional bullet-resistance.
- Multi-point locks providing high levels of security.
- Various paints, veneers, panel effects and finishes available.
- Suitable for commercial and high profile residential situations.

Aims

- Protect people and/or property both in the immediate attack zone or proximity.
- Designed to be discreet and match personal surroundings.
- Offer complete door solution package.





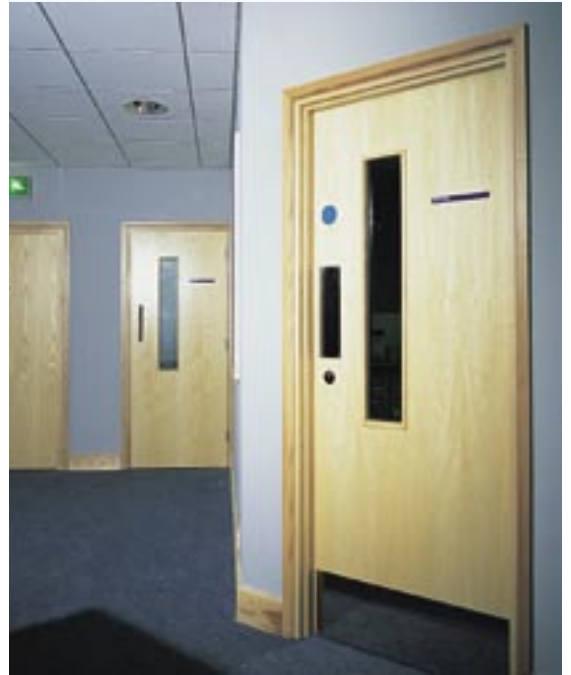
- The complete door solution
- Made to measure security
- People and property protection
- Discreet



Independent Fire Testing

Security Doors with Fire Protection

- Safeguard Doors are committed to independent testing and therefore fire safety is considered just as important as the security and integrity of these high performance doors.
- Security doors tested to LPS 1175 (levels 3+4) have also achieved a one hour fire rating when tested to the more onerous European Standard BS EN 1634-1 by Warrington Fire Research.
- Further assessments have also been carried out to cater for side screen, over panel and vision panel requirement.
- Due to ongoing testing/assessments please contact us for the latest developments.



Door shown at 1 hour



Door shown at 1 hour 11 minutes

The Safehaven Door

Door Specification

- A high security doorset.
- Designed to withstand sustained physical attack.
- Bullet resistant to British Standards.
- Provides significant blast protection.
- Independently tested.
- Locking system approved by Ministry of Defence and used in seclusion rooms, nuclear submarine bases, military installations.
- One hour fire resistance certificate.

Situation Information

- Made to open inwards or outwards.
- Can be used internally or externally.
- All styles and finishes available to match existing doors.
- All doors made to measure by hand.
- Safeguard Doors installation service strongly recommended.

Finishes

- Timber.
- Plastic.
- Laminates.
- Special coatings.
- For domestic and commercial applications.



The Fenwick and Cromwell Doorsets

The Fenwick Doorset

- Solid hardwood frame of minimum section 120mm x 70mm.
- Doorleaf has solid hardwood core lamels, with strategically positioned enhanced internal steel plate. Faced both sides with exterior quality ply faces. All laminations bonded with exterior quality adhesives. Overall thickness: 58mm. Full range of finishes available: veneers, paints, decorative and easy clean facings.
- 4 no. high security stainless steel hinges.
4 no. 16mm diameter high security hinge bolts fitting into high security hinge bolt keeps with provision for through fixing into masonry.
- 3 Point multi-point lock systems.
External options: Key access with provision for most cylinder types.
Internal options: Deadlocking, thumbturns, emergency escape handle, panic bars, lockback facility, solenoid operation for access control etc.
- Emergency escape hardware CE marked in accordance with BS EN 1125:1998+Rev. A1 or BS EN 179:1999+Rev A1.
- Fire rating to FD30 and FD60 in accordance with BS EN 1634-1.
Ballistic Rating: G0/G1 to BS5051.
This doorset has been subjected to independent blast testing for both blast pressure and fragmentation.



The Cromwell Doorset

- Solid hardwood frame of minimum section 120mm x 70mm.
- Doorleaf has solid hardwood core lamels. Insertion of anti-drill plates to protect doors fitted with panic or emergency exit devices is available when required. Faced both sides with exterior quality ply faces. All laminations bonded with exterior quality adhesives. Overall thickness: 54mm. Full range of finishes available: veneers, paints, decorative and easy clean facings.
- 4 no. high security stainless steel hinges with additional concealed hinge protection.
4 no. 16mm diameter high security hinge bolts fitting into high security hinge bolt keeps with provision for through fixing into masonry.
- Single and multi-point lock systems (surface and morticed options).
External options: Key access with provision for most cylinder types and cylinder protection.
Internal options: Deadlocking, thumbturns, panic handles, panic bars, lockback facility, solenoid operation for access control etc.
- Emergency escape hardware CE marked in accordance with BS EN 1125:1998+Rev. A1 or BS EN 179:1999+Rev A1.
- Fire rating to FD30 and FD60 or BS EN 1634-1.
Blast Rating: Doorset has been subjected to independent blast testing for both blast pressure and fragmentation.
- Optional vision panel available.



The Bowden and Wellington Doorsets

The Bowden High Security Doorset

- For inward or outward opening doors.
- Solid hardwood frame sections combined with a heavily fabricated steel framework.
- Doorleaf has solid hardwood core lamels. Enhanced with strategically positioned internal steel plates. Faced both sides with exterior quality ply faces/veneers. All laminations bonded with exterior quality adhesives. Overall thickness: 68mm. Full range of finishes available. Veneers, paints, decorative and easy clean facings.
- 5 no. high security stainless steel hinges.
4 no. 16mm diameter high security hinge bolts fitting into high security hinge bolt keeps with provision for through fixing into masonry.
- Adams Rite 3 point high security locking system. External access can be gained using Government approved locking mechanism. Internal options: Deadlocking, thumbturns, emergency escape handle, panic bars, lockback facility, solenoid operation for access control etc.
- Emergency escape hardware CE marked in accordance with BS EN 1125:1998+Rev. A1 or BS EN 179:1999+Rev A1.
- Fire rating to FD30 and FD60 in accordance with BS EN 1634-1. Ballistic Rating: G0/G1 to BS5051, G2/S86 to BS5051, FB4 to BS EN 1522: 1998/BS EN 1523: 1999. This doorset has been subjected to independent blast testing for both blast pressure and fragmentation.
- Available with vision panels.



The Wellington Doorset

- A range of doorsets designed specifically to provide protection from bomb blast and fragmentation. All doorsets take the appearance of timber doors and frames and have been tested to impulse pressures of over 1,000 KPa-ms. In addition, Wellington doorsets offer fragmentation protection from grenades and pipe bombs.
- Timber or steel reinforced timber frames.
- Doorleaf is a combination of timber and steel with internal strengthening and fabrication to still give the appearance of a timber doorset. Doors tested both inward and outward opening. Full range of finishes available. Veneers, paints, decorative and easy clean facings.
- Up to 6 no. high security blast tested stainless steel modified hinges. 16mm diameter high security hinge bolts.
- Available with single or multi-point locking dependent upon functions and performance requirements.
- Fire rating to FD30 and FD60 or BS EN 1634-1. Bomb blast doorsets are also available with protection for ballistic attack and Government/LPCB security attacks.
- Vision Panel available at all blast levels.



Web Site and Video

The Safeguard Doors web site features a downloadable video of The Safehaven Door withstanding physical attack, along with full details of the Safeguard Doors product range.

www.safeguarddoors.co.uk



www.safeguarddoors.co.uk/video



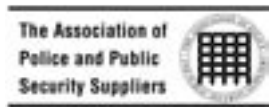
www.adamsrite.co.uk/high-security-locking



Safeguard Doors



A DIVISION OF ADAMS RITE EUROPE LIMITED



Safeguard Doors

A DIVISION OF ADAMS RITE EUROPE LIMITED



ASSA ABLOY is the world's leading manufacturer and supplier of locking solutions, meeting tough end-user demands for safety, security and user friendliness. The Group has some 30,000 employees and annual sales of about EUR 3 billion.



Assessed to ISO 9001:2000
Certificate No: 661

Safeguard Doors, Unit 6-9 Bridge Business Park, Bridge Street, Wednesbury, West Midlands, WS10 0AW, United Kingdom
Tel: +44 (0)121 556 9138 Fax: +44 (0)121 556 7275 Email: sales@safeguarddoors.co.uk www.safeguarddoors.co.uk
November 2006 (Issue 6) ©Safeguard Doors/Adams Rite Europe Limited. All dimensions are nominal and subject to tolerances.

An ASSA ABLOY Group company

ASSA ABLOY